

Seven Areas of Focus

Question:

Will the “Seven Areas of Focus” simply be replaced by the “Seven Areas of Concern?”

Answer: Not exactly because.

* The Seven Areas of Focus were related to ALL LOCAL MEP ACTIVITIES.

* The Seven Areas of Concern refer to migrant specific needs and, therefore relate only to Service Delivery Activities for the MEP



The Office of Migrant Education (OME) has identified Seven Areas of Concern.

- Migrant-specific Areas inhibiting Success in School
- 1. Educational Continuity
- 2. Instructional Time
- 3. School Engagement (behavioral, emotional, cognitive)
- 4. English Language Development
- 5. Educational Support in the Home
- 6. Health
- 7. Access to Services



Seven Areas of Concern:

1. Educational Continuity



- As Migrant children move outside school district or state during the school year, they often experience differences in curriculum, academic standards, policies or expectations. This lack of continuity presents barriers to academic achievement.

Seven Areas of Concern:

2. Instructional Time

- Migrant children's mobility also impacts the amount of time they spend receiving instruction and their attendance patterns.



Seven Areas of Concern:

3. School Engagement

- With frequent adjustments to new school settings, migrant students often face difficulty making new friends and gaining social acceptance, which can inhibit their ability to do well in school. A student's school engagement can be affected by three types of factors, which can be grouped according to behavioral, emotional, and cognitive engagement.



Seven Areas of Concern: School Engagement (continued)

Behavioral Engagement relates to opportunities to participate in academic, social or extracurricular activities and is crucial to positive academic outcomes and preventing school dropout.



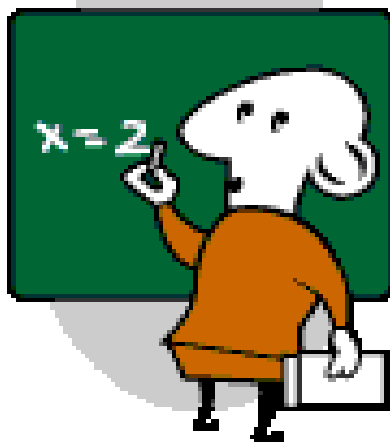
Seven Areas of Concern: School Engagement (continued)

- Emotional Engagement relates to a sense of belonging and feeling valued and can be tied to reactions involving teachers, classmates, materials and school, in general.



Seven Areas of Concern: School Engagement (continued)

- Cognitive Engagement is tied to the student's investment in learning and may be a response to expectations, relevance and cultural connections.



Seven Areas of Concern:

4. English Language Development

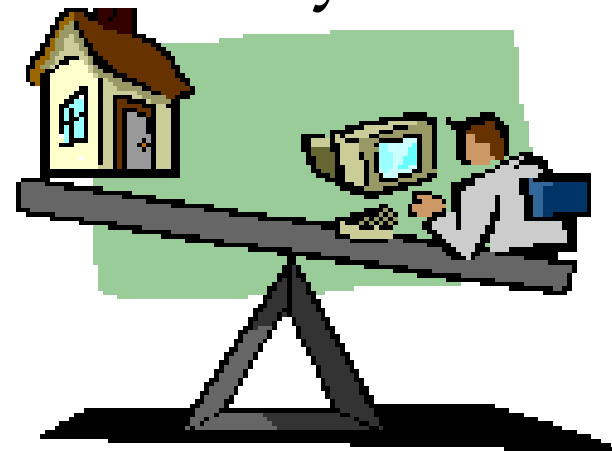
- English Language development is critical for academic success. English language development focuses on the literacy skills needed for successful content area learning.



Seven Areas of Concern:

5. Educational Support in the Home

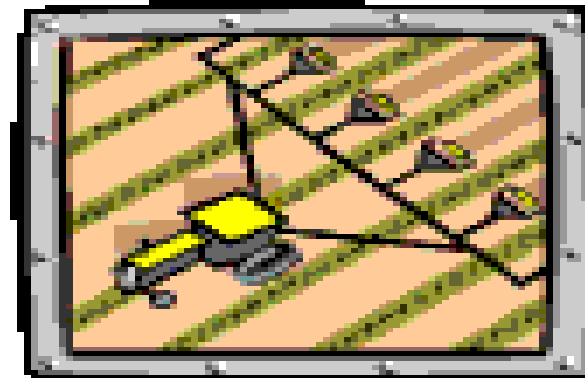
- While many migrant parents value education for their children, they may not be able to support their children as the school expects or may not have the means to offer an educationally rich home environment.



Seven Areas of Concern:

6. Health

- Migrant students have higher proportions of acute and chronic health problems. They are at greater risk due to pesticide poisoning, farm injuries, heat-related illness and poverty. Migrant families are less likely to have health insurance and more likely to have difficulty accessing services to address health-related needs.



Seven Areas of Concern:

7. Access to Services

- Migrant families often have a newcomer status and a home language other than English. These factors often limit their access to educational and educationally-related services available in the school and community.



MEP Service Delivery 2008

- Produced by
- **Pat Escamilla**
- **Edinburg CISD**
- **Migrant Coordinator**

- **September 1, 2008**

